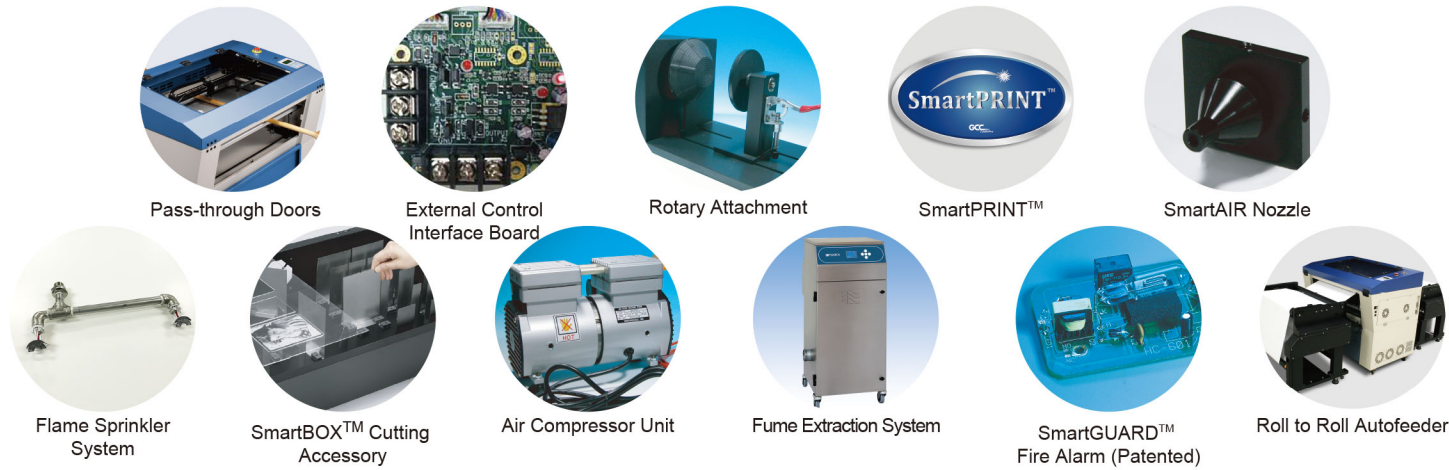


## Optional Items



Specification		Spirit
Work Area		25 x 18 in. (640 x 460 mm) Extendable to 29 x 18 in. (740 x 460 mm)
Max. Part Size (W x L x H)	All doors closed	30 x 19 x 6.5 in. (762 x 482.6 x 165 mm)
	All doors open	30 x ∞ x 6.5 in. (762 x ∞ x 165 mm)
Table Size		31.1 x 20.9 in. (790 x 530 mm)
Dimensions		44.3 x 28.3 x 39.6 in. (1125 x 720 x 1005 mm)
Laser Source		12 to 100W 10.6- $\mu$ m sealed CO <sub>2</sub> Laser / 20W & 60W 9.3- $\mu$ m sealed CO <sub>2</sub> Laser
Cooling		Air-cooled, Operating environment temperature 15°- 30°C (60°- 86°F)
Drive		Closed-loop DC Servo Control
Throughput*		245.5 in <sup>2</sup> / hr (1584 cm <sup>2</sup> / hr)
Throughput* with SmartACT™ Enabled		283.4 in <sup>2</sup> / hr (1828.8 cm <sup>2</sup> / hr)
Speed Control		Adjustable from 0.1-100% of 60 ips (Up to 16 color-linked speed settings per job)
Power Control		Adjustable from 1-100% (Up to 16 color-linked power settings per job)
Engraving Capability		256-level gray scale image processing capability
Distance Accuracy		0.254 mm or 0.1% of move, whichever is greater
Z-Axis Movement		Automatic
Focus Lens		Standard 2.0", optional 1.5", 2.5", & 4.0" available
Resolution (DPI)		Available 125, 250, 300, 380, 500, 600, 760, 1000, 1500
Computer Interface		10 Base-T Ethernet, Full speed 2.0 USB
Compatible Operating Systems		MS Windows
Display Panel		4-line LCD display showing current file name, total working time, laser power, engraving speed, file(s) loaded into memory buffer, setup and diagnostic menus
Safety		Class I Laser Product Compliant with EN60825, Class II Laser Product Compliant with CDRH 2006/42/EC Machinery Directive Compliance Class 4 Laser Product Compliant with CDRH with the optional pass-through door module
Operation Voltage		Laser below 80Watt, 100-240VAC, 50-60Hz Auto Switching, Max. 15A Laser 80Watt and above, 200-240VAC, 50-60Hz, Max. 15A
Fume Extraction System		External exhaust system with minimum flow rate 640m <sup>3</sup> /h (CFM 377 ft <sup>3</sup> /h) is required, 2.3kPa negative pressure (Pure-Air PA-1000FS @ 4" exhaust port)

\* Speed does not equal to throughput. See dealer or visit [www.GCCworld.com](http://www.GCCworld.com) for more details.  
 Δ Specifications are subject to change without prior notice.

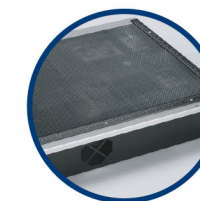
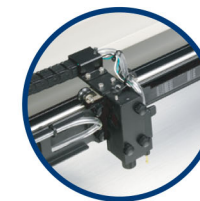
Authorized Dealer


[www.GCCworld.com](http://www.GCCworld.com)


Laser Engraver

# GCC LaserPro Spirit

## Ingenious and Versatile Designs



# Spirit

- 25" x 18" (640 X 460 mm) working area
- 60 IPS high working speed
- Patented SmartACT™ motion control technology innovation to reduce ramping and shorten running time
- Plug-and-play standard USB port for rapid data transmission
- Closed-loop DC servo motor for precise movement of laser carriage
- Patented SmartGUARD™ fire alarm device to provide maximum operation safety
- Pass-through front and rear doors to accommodate long working pieces
- Truelmage (patented) features to assure homogeneous engraving output



GCC Headquarters 4F-1., No.236, Fude 2nd Rd., Xizhi Dist., New Taipei City 22151, Taiwan 886-2-6616-6692 Fax : 886-2-2694-6875  
 GCC China No. 1, Chen Feng Road, Yushan, Kunshan, Jiangsu 215300, China 86-512-5726-1515 Fax : 86-512-5726-1518  
 GCC Europe B.V. Eglantierbaan 43-45, 2908 LV, Capelle a/d IJssel, The Netherlands 31-10-458-9367 Fax : 31-10-451-9874  
 GCC America, Inc 20453 E Valley Blvd. Walnut, CA 91789, USA 1-909-718-0248 Fax : 1-909-718-0251  
 US & Canada Only Toll Free: 1-888-284-5211





Laser Engraver

# GCC LaserPro Spirit

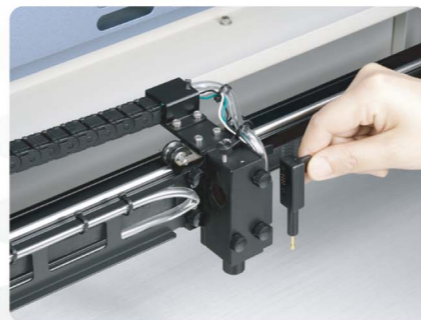
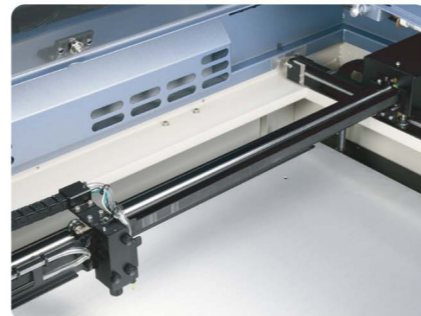


## GCC LaserPro Spirit

GCC LaserPro Spirit is designed with the operator in mind and carrying various innovative features, reliable mechanics, and excellent output quality. GCC LaserPro Spirit is the missing piece in your operations puzzle, putting you on track for continued growth in your engraving and cutting business!

### DuraGuide Motion Design

Systematic and reliable motion system embedded with strong mechanical framework and accurate servomotor control technology to deliver superb output quality under rapid movement.

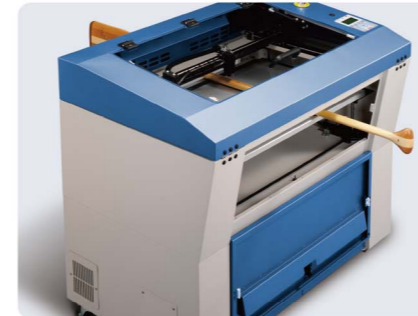


### SmartPIN AutoFocus (Patented)

The plug-and-play probe design makes focusing a one-touch process and provides the accuracy and precision required for optimum quality in the lasing process.

### Pass-through Front & Rear Doors (Optional)

Optional front and rear door open design enables loading of extremely long working pieces with ease and extends business flexibility.

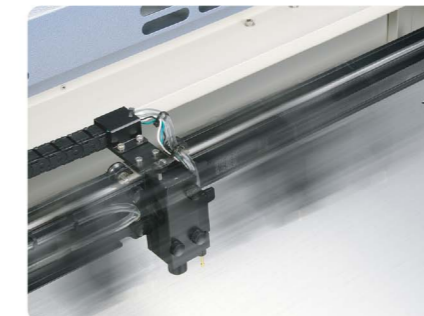


### SmartLID™ (Patented)

An innovative lid that opens from both ends allowing easier access for daily maintenance.

### SmartACT™ (Patented)

Ground-breaking technology that reduces the ramping process, the job running time, which translates into higher productivity.

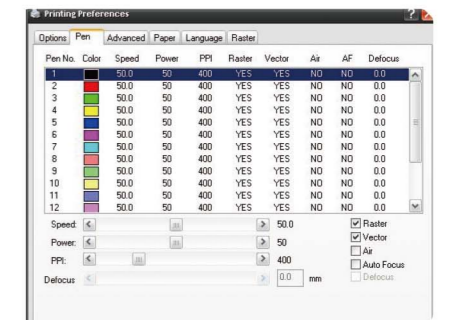


### Key Switch & Emergency Stop

Key switch safeguards the machine from unauthorized use. Prominent emergency button located on the top of the machine allows operators to stop the laser and the motion carriage immediately to provide a safe operating environment.

### Intuitive Control Panel Interface

A control panel with coherent hot-key design and graphical icon displays that allows you to change laser parameter settings, set jobs to repeat unlimited times, queue jobs, delete jobs, and more.



### Innovative Software Features

Various user friendly features such as SmartCENTER, Defocus by pen, allows users to reduce set up time and make easy adjustments to achieve marvelous output quality.